

Using Read Live in a Distance Learning Model

We will begin our webinar shortly. Please stand by.



Ben Weisner

- Sr. Relationship Manager for Read Live
- ben@readnaturally.com
- 651-286-8722



- Read Live and Distance Learning
- Getting Started
- Communicating with Parents
- Parents as Assistants
- Screen Sharing and Remote Control
- Placement and Adjusting Levels
- Adjusting Story Options
- Using the Student Module
- Conducting Pass Activities
- Recording Student Audio
- Monitoring Student Progress
- Print Resources for Offline Use

Read Live and Distance Learning

- Web-based, multi-device, offline support
- New features, including Login As, Current Story Details, more to come...
- Most steps completed independently
- Customizable, supports differentiation
- School-to-home tools and support
- Up-to-date how-to's and training

Resources

- More info
 - [Using Read Live in a Distance Learning Model](#)
 - A detailed series of articles on our web site that reflects much of the information covered in this webinar

Setting Up

- Review resources and training online, schedule a webinar
- Set up account, add students
- Place students and adjust options
- Train students and communicate with parents

Resources

- More info
 - [Sign up for a trial](#)
 - [Setting up your account](#)
 - [Get students started](#)
 - [Read Live Help resources and training](#)
 - [Read Live login page](#)
 - [Recorded webinars](#)

School-to-Home

Parent Communication Tools

- Email or print
 - Welcome letter ([ENG](#) / [SP](#))
 - Steps poster ([ENG](#) / [SP](#))
 - Progress letter (Staff)
 - Certificates and awards (Staff)
 - Copy of story (Staff or Student)
 - Story details report (Staff or Student)
- [Student's Guide to Read Naturally Live](#)

Add Contacts for Easier Communication

Student Details for Melissa Powell

*Required

Student Information

*First Name

Melissa

*Last Name

Powell

Status

Active

Student ID

1234

*Grade

4

*School

Peter Hobart Elementary

Homeroom ⓘ

Unassigned

Student Login Info

*Student User ID

mpowell

*Password

*Verify Password

License

License this student?

Yes

Lead Teacher

Teacher, Joe

Contact 1 ⓘ

Relationship

Mother

First Name

Janet

Last Name

Powell

Email

jpowell@readnaturally.com

Contact 2 ⓘ

Entering contact information enables the student's lead teacher to send progress letters and awards to the contact.

If two contacts are entered, messages will be sent to both.

Last Name

Resources

- More info
 - [Communicating With Parents/Guardians](#)
 - [How To: Communicating with parents and guardians](#)
 - [Partnering With Parents for Reading Success](#)


Parents as Assistants

- Do not give parents your password
- Account admin or school coordinator can create a Read Live Assistant
- Assistants can conduct timings and choose remedial actions, but can't view or modify student data
- Create ONE Assistant account or MANY
- Provide training resources, discuss expectations

What Can Assistants Do?

- From within the Student module:
 - Conduct cold timings and pass activities
 - Review student work; reset story, print stories and awards

*Role Learn more about roles	Add/edit schools	Add/edit staff members	Add/edit & license students	View student data (placement, scores, reports)	Can be a student's "lead teacher"	Conduct timings and pass activities
<input type="radio"/> Account Administrator	X	X	X	X	X	X
<input type="radio"/> School Coordinator		X	X	X	X	X
<input type="radio"/> Teacher			X	X	X	X
<input type="radio"/> Read Live Assistant						X



Supporting Assistants

- Assistant can log into Staff module with their Assistant ID (see next slide)
- [Empowering Parents to Complete Pass Activities](#)
- [Read Live Assistant intro/overview email template](#)
- [Student's Guide to Read Naturally Live video series](#)
- Steps poster ([ENG](#) / [SP](#))



Thank you!

Reading is a critical skill that can significantly impact students both inside and outside the classroom. By assisting with the Read Naturally Live program, you can help make a difference in the lives of the students with whom you work.

Read Naturally Live is a research-based program that enables students to become fluent readers. Students complete most of the Read Naturally Live steps independently, but you will help students with the steps that require an adult.

The resources below will help explain how to assist students working in Read Naturally Live.

Resources

[The Steps of Read Naturally Live](#)

[Conducting a One-Minute Timing](#)

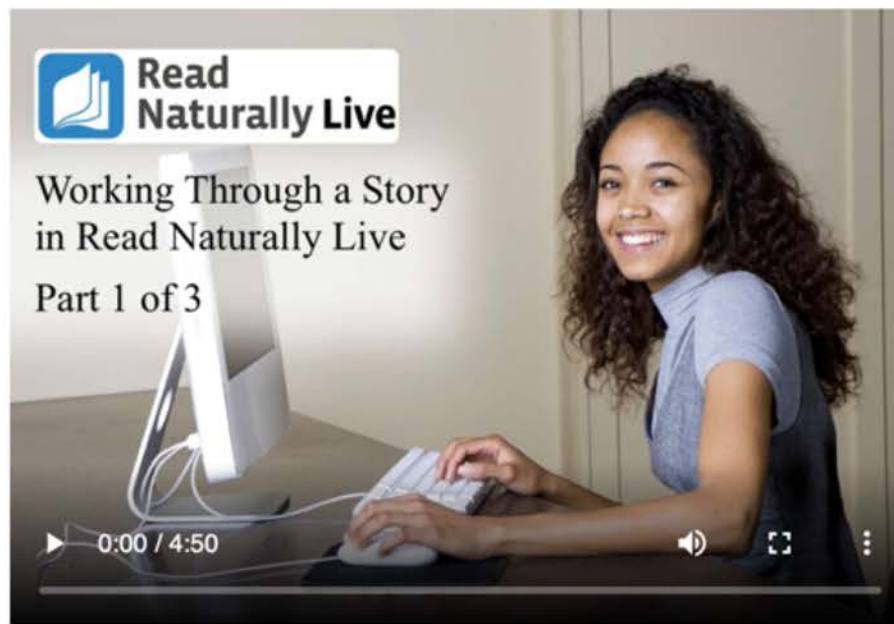
[Determining if a Student has Passed](#)

[Responding if a Student Does Not Pass](#)

[Read Live User Guide](#)

▼ Working Through a Story – part 1

This video explains the first few steps students follow when starting a story.



- Pay special attention to the Cold Timing step. When the header turns red, a teacher or assistant needs to log in and listen to the student read aloud for one minute.
- During the timing, help the student identify missed words, but don't stop to discuss the errors until after the timing, since discussion during the timing would lower the student's score.

► Working Through a Story – part 2

► Working Through a Story – part 3

► Working Through Phonics Stories

► Options for Students Who Do Not Pass a Story

Resources

- More info
 - [Q&A: Read Live Roles](#)
 - [Using Read Live During School Closures](#)
 - [Using Read Live at Home](#)
 - [Communicating with Parents](#)

Screen Sharing and Remote Access

Sharing and Controlling Screens

- Use apps to share or control screens on student devices
 - Placement, conducting cold timings and pass activities, student support
- Requires planning, setup, and training
- Review district's policies regarding parental consent
- Zoom, Google Meet/Remote Desktop, MS Teams

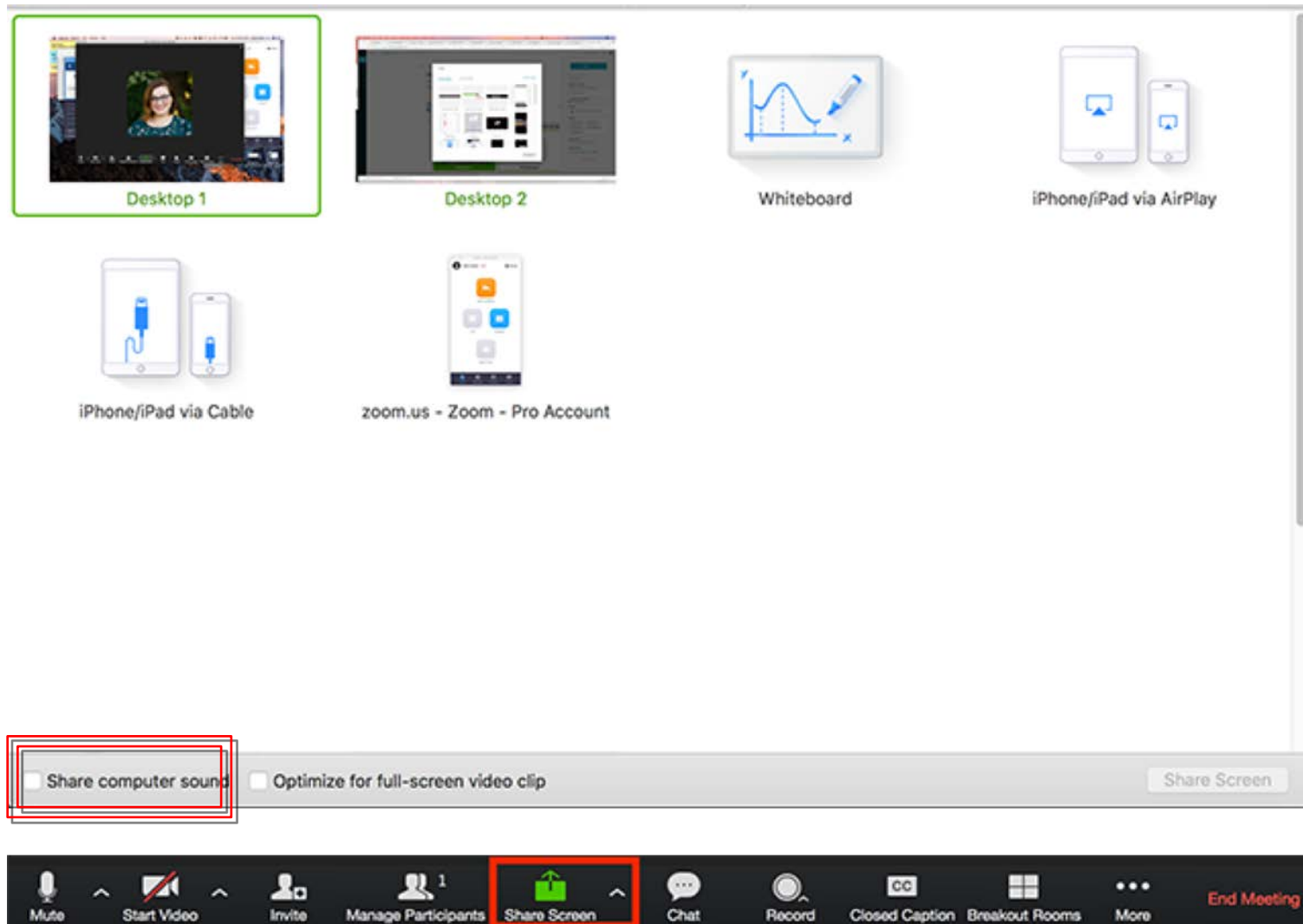
Control Another Screen

- You can either request remote control of other participant's screen or other participant can give control to you.*
 - * Can't control iPad screen
- Useful for teacher-required cold timing; pass activities

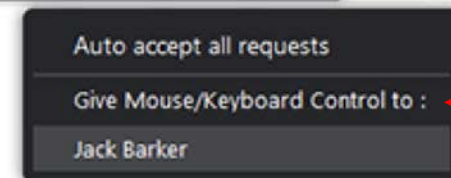
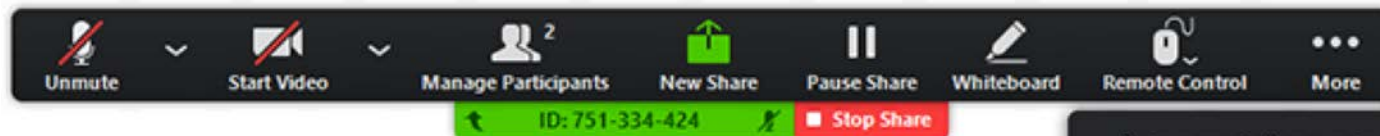
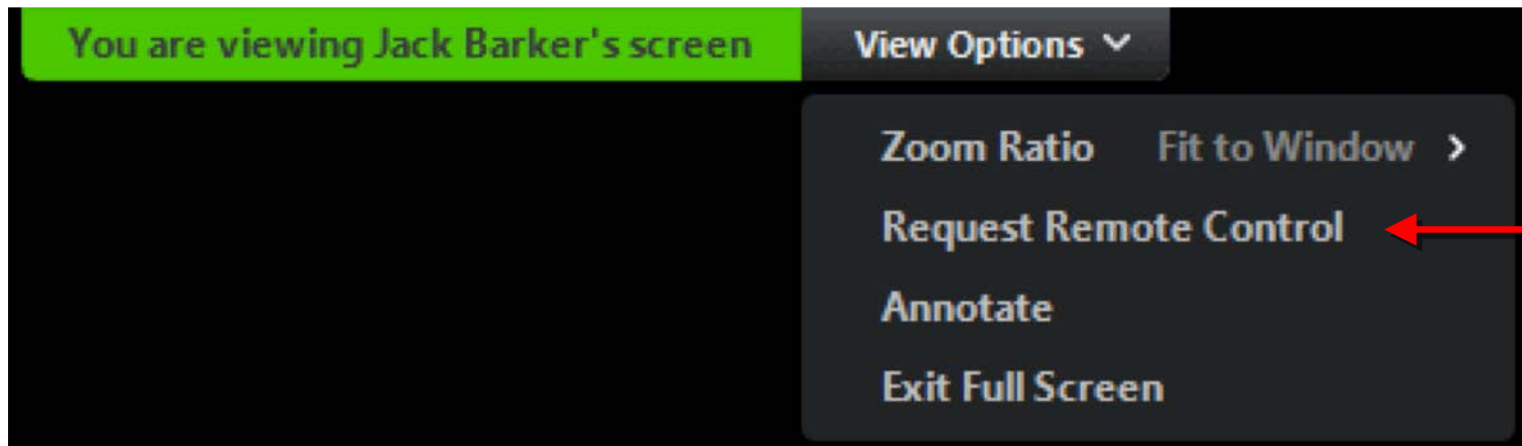
General Steps

1. Start session with one or more students.
2. If you are working with multiple students, put each in separate breakout rooms (Zoom), use concurrent meetings (Google Meet), use channels (MS Teams) or ask students to mute themselves and others until they work with teacher.
3. Agree on a method for student to indicate they are ready for timing or that they need assistance (e.g., chat, raised hand, etc.).
4. Request control of student screen (if possible), OR;
5. Log in as student and share screen with them.
6. Perform timing or provide other supports.
7. When timing or pass activities are complete, relinquish control over student screen.

Share Screen



Control Another Screen



Tips

- Review and adjust settings
- Before sharing screen, turn on setting to share computer audio
- For multiple students during a session, use breakout rooms (Zoom), or concurrent sessions (Google Meet), or channels (MS Teams)
- Share files like PDF of placement passage, story, or crossword as needed
- Record session for review

Resources

- More info
 - [Screen sharing and remote access tools](#)
 - [Conducting Hot Timings with Remote Students Using Login As](#)
 - [Using Zoom with Read Live](#)
 - [Using Google for Education with Read Live](#)
 - [Using Microsoft Teams with Read Live](#)
 - [Using Breakout Rooms in Microsoft Teams](#)

Placement & Adjusting Levels and Goals

Options for Placement

- Teacher shares Placement screen
 - Student can read from Placement screen that teacher shares via app (or paper copy of placement passage)
- Student shares Placement screen on initial login
- If you already know student's level and goal, or if you want to perform placement over phone, you can enter settings manually in Staff

Placement Basics

Read Naturally

Read Naturally

Read Naturally Live > Placement for Lee Her

Close

Placement Step 3: Analyze Results

Print

Placement Step 3: Analyze Results

Student's Results

Score from the most recent test is in bold type.

Placement Testing Level	Student Score (wcpm)	Placement Range (wcpm)
3.0	52	30 - 60

Choose an option and click Next

Continue testing

Return to the first placement screen to select a different level to test.

Stop testing and pick a level (recommended)

The student's results fit in a placement range. Select a series, level, and goal from the list below.

Series	Level	Goal
Sequenced	3.0	80
Idioms	3.0	80
Phonics	2.7b long o, u, and mixed	80
Phonics	2.7a long a, e, i	80
Phonics	2.6b short o, u, and mixed	80
Phonics	2.6a short a, e, i	80

Next

Cancel

Resources

- Videos
 - [Read Naturally Live: Placing students](#)
- More info
 - [Placing Each Student](#)
 - [Do Your Read Naturally Students Have the Correct Placement?](#)
 - [Placing for Success \(And a Word About Phonics\)](#)

Story Options

Adjust Story Options

- Allow student to perform Cold Timing without requiring teacher or parent to be present
- Access from Staff or Student modules
- Make other adjustments as necessary.
For example:
 - Adjust time or remove requirements for prediction and/or retell
 - Add Spanish read along for some students

Change Story Options for Tom Wilson

Sequenced 3.0 / 75 words correct per minute

☒ Key Words

☒ Prediction

Time limit (minutes)

2



☒ Cold Timing

Teacher required



☒ Read Along

Required read alongs

3



Speed

Auto



☐ Spanish Read Along 

Practice

Duration 

1 minute



Required practices

3



☒ Quiz

☒ Retell (Sequenced & Idioms only)

Time limit (minutes)

5



☒ Word List (Phonics only)

Duration

1 minute



Save & Close

Cancel

Restore All Defaults

Resources

- Videos
 - [Read Naturally Live: Setting story options](#)
- More info
 - [Story Options: Customizing the Program for Students](#)

Using the Student Module

How Do Students Log In?

- Need appropriate device and internet
- Go to: readlive.readnaturally.com
- Click “Student” button
- Enter student credentials
 - Account ID (000#####)
 - User ID
 - Password
- Make sure to log out when done; sessions are saved



Read Naturally **Live** Steps



1. Select a Story

Click the story you want to read.



2. Key Words

Click to learn the key words.



3. Prediction

Predict what the story will be about.



4. Cold Timing

Time yourself reading, and then view the graph.



5. Read Along

Read along with the narrator.



6. Practice

Practice reading on your own.



7. Quiz

Answer the quiz questions.



8. Retell/Word List

Retell the story or practice reading words from a phonics lesson.



9. Pass

Read the story to your teacher, and then view the results together.



Opening Read Naturally Live

On the Student Login page, enter your account ID, user ID, and password, and click Log In.



Closing Read Naturally Live

Always click Log Out to close the program.



Progress Bar

The bar at the top of the screen shows where you are in the steps.



Repeating Instructions

Click to hear the instructions again.



Using the Reading Guide

Click to turn the reading guide on or off.



Starting the Timer

Click to start timing yourself reading the story.



Stopping and Restarting

Click if you want to stop reading so you can start over.



Finishing a Story

Click if you finish reading a story before the bell sounds.



Wordtastic

Play this word game while you wait for your teacher to log in. Click the best answer to score points.



Resources

- Videos
 - [Student's Guide to Read Naturally Live](#)
 - [Conducting a One-Minute Timing](#)
- More info
 - [Steps Poster](#)
 - [Lesson Plan for Teachers](#)
 - [Fidelity Checklist](#)

Conducting Pass Activities

What Are Pass Activities?

- Perform hot timing
 - Start timing
 - Count missed words
 - Assess expression
- Review open-ended quiz questions
- Review retell
- Word list timing (Phonics series only)
- Review work with student
- Conduct remedial actions

Options for Pass Activities

1. Parent performs pass activities
2. Student completes most steps at home, pass activities in classroom (hybrid)
3. Teacher uses remote control to conduct pass activities
4. If remote control not possible, log in as student and share your screen
5. Student records audio of themselves reading passage and shares with teacher

Resources

- Videos
 - [Working through a story](#)
 - [Options for students who do not pass](#)
- More info
 - [Conducting Hot Timings with Remote Students Using Login As](#)
 - [Conducting a one-minute timing](#)
 - [Completing the pass step](#)
 - [Options for students who don't pass](#)

Recording Student Audio

Record and Share Reading

- Student launches recording app
- Record reading from Pass/More Practice screen or print/email of story PDF
 - Student can listen/reflect and try to improve their performance before sharing
- Share recording via email, Google Classroom, or other available tools
- Teacher receives recording, logs in as student, and completes pass activities

Options for Recording Audio

- SeeSaw
- Screencastify
- Vocaroo
 - Free, simple, easy-to-use
- Read Live
 - Available later this year: built-in recording and notification

Resources

- More info
 - [Recording Student Audio for Hot Timing](#)
 - [Conducting Hot Timings with Remote Students Using Login As](#)
 - [Vocaroo recording app](#)

Progress Monitoring

Monitoring Student Performance

Create ongoing challenge to maximize achievement:

- The student should be challenged, but not frustrated, by the level of text difficulty.
- The student should be able to reach the goal—not easily, but with effort.



Monitoring Student Performance

Two phases:

- Check the student's initial placement after three stories.
- Keep the student challenged over time.



Monitoring Student Performance

Read Naturally can review your reports, perform an analysis of your data, and provide recommendations.

Please contact:

[Claire Hayes](#)

clairehayes@readnaturally.com



Resources

- Videos
 - [Read Naturally Live: Monitoring student performance](#)
- More info
 - [When Should You Change a Student's Goal or Level?](#)
 - [Checking Initial Placement Instructions](#)
 - [Adjusting Levels and Goals](#)

Print Resources

Print Resources

- You can share PDFs via Google Classroom, Zoom, or email to parents. If there's no internet at home, mail packets with stories and glossaries
 - Print stories; includes quiz and word list
 - Placement passages
 - [Crossword puzzles](#)
 - [Glossary](#)
- Visit [Read Live Help](#) page

Just Released

- [Word Warm-ups Live](#)
 - Differentiated support for students who need additional phonics instruction
 - Engaging instruction in the most common phonics patterns

Coming Soon!

- Distance Learning Enhancements
 - Easier screen sharing
 - Record student timing for later review
 - Track student progress and time-on-task

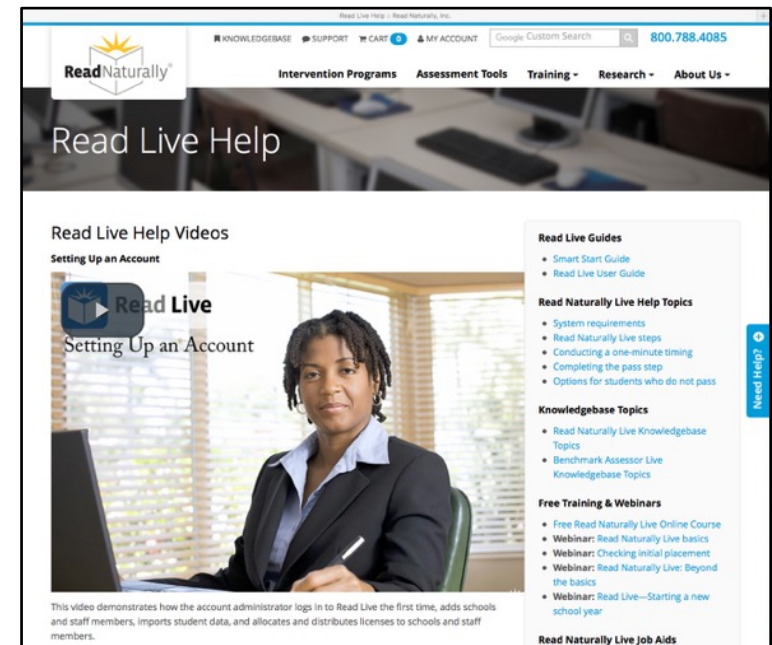


Read Live

Free Resources

[Read Live Help page:](#)

- Read Live Help Videos
- Read Live Guides
- Read Live Help Topics
- Knowledgebase Topics
- Free Training & Webinars
- Training for Students
- Read Naturally Live Job Aids



Upcoming Webinars

- Public Webinars
 - [Register for live webinars](#)
 - Intro to Word Warm-ups Live (Aug 27)
 - [View recorded webinars](#)
 - Starting a New School Year (Aug 12)
 - Read Live Basics (Aug 19)



Read Live

800-788-4085

www.readnaturally.com