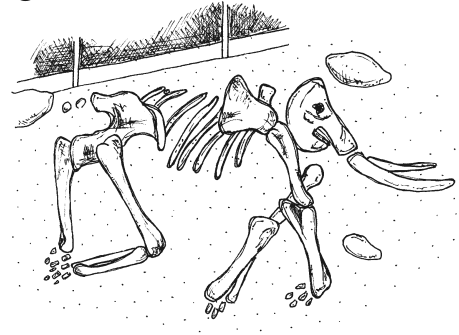


## Review Key Words<sup>1</sup>

- site** A site is the place or location of something.
- sinkhole** A sinkhole is an opening in the ground. A sinkhole is often deep and filled with water.
- museum** A museum is a place that has beautiful, interesting, or unusual things to look at.
- fossils** Fossils are what is left of plants and animals that have been dead a very long time.



## Write a Prediction

---



---

## Read the Story<sup>2-4</sup>

6 The **sinkhole** was about 60 feet  
13 deep. It was filled with warm water  
18 and plants. Large animals walked  
25 into the sinkhole to eat and drink.

32 The animals could not get out, so  
38 they died there. The sinkhole filled  
45 with mud and dried up. The animals  
51 stayed buried for about 26,000 years.

56 In 1974, some workers **uncovered**  
62 the animals. Scientists came to the  
68 **site** to study them. The scientists  
73 learned many things about the  
74 animals.

80 What kind of animals were they?  
They were **ice-age** animals. Many of

87 them were mammoths. Mammoths  
91 were huge **mammals**. They looked a  
97 little bit like elephants. They had big  
104 trunks and long **tusks**. But  
109 mammoths **died out** thousands of  
114 years ago.

116 The site where people found the  
122 mammoths is now part of a **museum**.  
129 Many people visit the Mammoth Site  
135 each year. They come to see the  
142 **fossils** of these **extinct** animals. This  
148 museum is in Hot Springs, South  
154 Dakota.

words read \_\_\_\_\_

- errors \_\_\_\_\_

= \_\_\_\_\_  
cold score

words read \_\_\_\_\_

- errors \_\_\_\_\_

= \_\_\_\_\_  
hot score

goal \_\_\_\_\_

expression \_\_\_\_\_  
date passed \_\_\_\_\_

# Mammoth Site

---

## Answer the Questions

1. What is the main idea of this story?
  - a. Many people visit the Mammoth Site in Hot Springs, South Dakota.
  - b. Ice-age animals called mammoths died in a sinkhole that is now part of a museum.
  - c. Animals that went to a sinkhole could not get out, so they died there.
2. For about how long did the animals stay buried?
  - a. 1,974 years
  - b. 60 years
  - c. 26,000 years
3. What does the word **extinct** mean in this story?
  - a. long tusks
  - b. uncovered
  - c. died out
4. Why did mammoths go to the sinkhole?
  - a. to get stuck in the mud
  - b. to drink water and eat plants
  - c. to see if elephants were there
5. How are elephants of today like the mammoths of long ago?

---

---

Number Correct: \_\_\_\_\_

## Retell the Story

---

---

---

---

---

---

---

---

---

---

Number of Words Written: \_\_\_\_\_