

CLOSELY MONITOR STUDENTS' READING DEVELOPMENT



Reading Fluency Progress Monitor (RFPM) **assesses the progress of developing readers** who are **receiving targeted intervention** throughout the year. Progress-monitoring passages should be at **students' instructional levels** to be most sensitive to reading improvement.



Watch a free webcast about Reading Fluency Progress Monitor:

www.readnaturally.com/webcasts

Appropriate For...

Grade Level: Grades 1-8

Use: On-Level or Out-of-Level Progress Monitoring, Grades 1-Adult



HOW IT WORKS:

The Reading Fluency Progress Monitor includes 30 fiction and nonfiction passages with strong validity and reliability at each grade level. Teachers can monitor progress regularly throughout the year (monthly, biweekly, weekly) by assessing, recording, and analyzing the oral reading fluency of their students.

This data helps teachers make timely instructional decisions, determine if instruction and/or interventions are effective, and document and communicate student progress.

Administration:

1. Listen to a student read a passage at his/her instructional level for one minute.
2. Determine the student's words-correct-per-minute (wcpm) score.
3. Graph the student's wcpm and mean scores.

WHAT'S INCLUDED

Assessment Passages

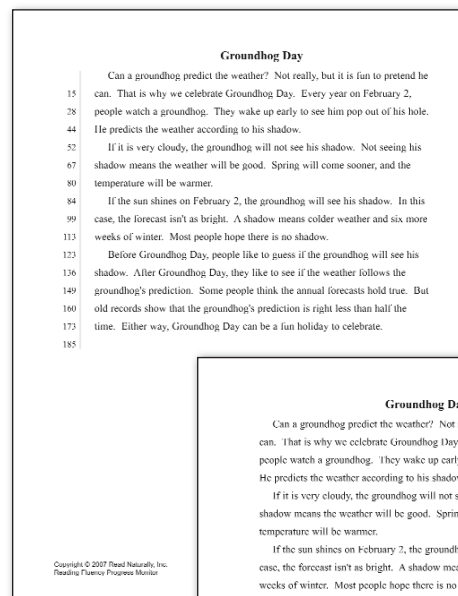
- Reproducible masters of 30 passages at each grade level (1–8), representative of general curriculum.
- Student and examiner copies of each passage match except that the examiner copies include line-by-line word counts to help you score the students' results.
- Leveled using Fry and Spache (grades 1–2), Harris-Jacobson (grades 3–4), and Dale-Chall (grades 5–8) readability formulas.
- Rigorously field-tested to ensure that all passages for a grade level are of equal difficulty.

Instructions and Record-Keeping Aids

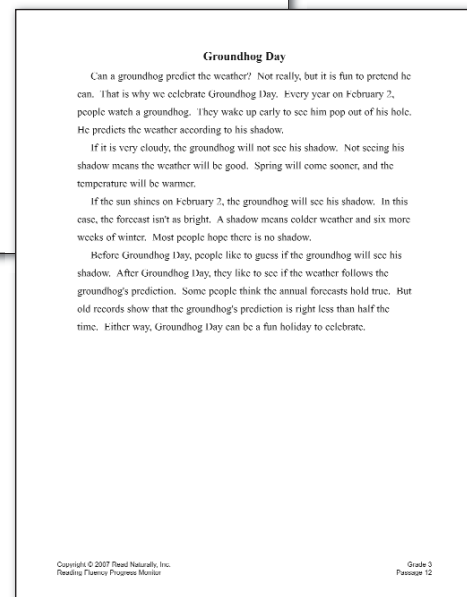
- Detailed instructions for administering the passages.
- Graphs and record sheets for manual record-keeping.
- Normative data to help you make educational decisions based on the results.

PRODUCT LEVELS

Grades 1–8 (one separately priced book of 30 passages for each level)



Examiner Copy

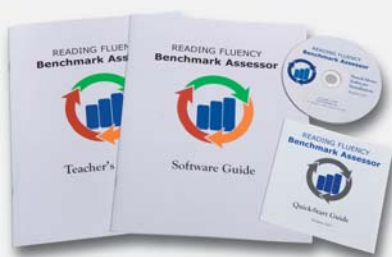


Student Copy

OTHER PRODUCTS YOU MAY BE INTERESTED IN:

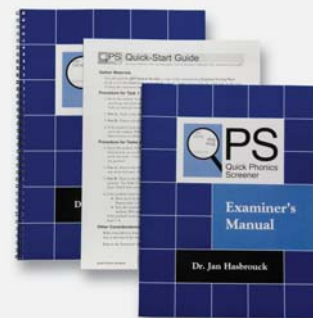
Reading Fluency Benchmark Assessor

A reliable and efficient way to assess students' reading proficiency (fall, winter, spring) and evaluate it relative to past scores and national norms. Helps identify students who may need a reading intervention program.



Quick Phonics Screener

An easy-to-use, informal tool for individually assessing students' word-reading skills. Use the results to plan instructional or intervention programs in basic word-reading and decoding skills.



www.readnaturally.com

**Better Tools.
Better Readers.
Brighter Futures.**

800.788.4085

Check out the Read Naturally website for lots of great information, including product descriptions, training options, and much more.