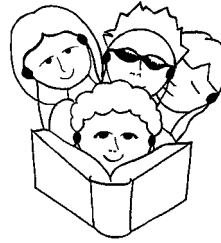


# READ NATURALLY SE

## Installation Guide



### Table of Contents

<b>Chapter 1—General Information</b> .....	1
System Requirements .....	2
Installation Types .....	3
Contacting READ NATURALLY .....	4
<b>Chapter 2—Windows Stand-Alone Installation</b> .....	5
What's Installed .....	5
Installing the Windows Stand-Alone Version .....	6
Task 1: Licensing READ NATURALLY SE .....	6
Task 2: Installing READ NATURALLY SE .....	7
Task 3: Adding Additional Levels .....	8
Task 4: Getting Started in the Teacher Management System .....	9
Uninstalling the Windows Stand-Alone Version .....	10
<b>Chapter 3—Macintosh Stand-Alone Installation</b> .....	11
What's Installed .....	12
Installing the Macintosh Stand-Alone Version .....	13
Task 1: Licensing READ NATURALLY SE .....	13
Task 2: Installing READ NATURALLY SE .....	14
Task 3: Adding Additional Levels .....	15
Task 4: Getting Started in the Teacher Management System .....	16
Uninstalling the Macintosh Stand-Alone Version .....	17

## Table of Contents, continued

<b>Chapter 4—Windows Network Installation</b> .....	18
What's Installed .....	19
Installing the Windows Network Version .....	20
Task 1: Setting Up Access Privileges .....	20
Task 2: Licensing READ NATURALLY SE .....	21
Task 3: Installing the READ NATURALLY SE Server .....	22
Task 4: Adding Additional Levels .....	23
Task 5: Copying Stories to the Server .....	24
Task 6: Installing READ NATURALLY SE at Workstations .....	25
Task 7: Getting Started in the Teacher Management System .....	27
Uninstalling the Windows Network Version .....	28
<b>Chapter 5—Macintosh Network Installation</b> .....	29
What's Installed .....	30
Installing the Macintosh Network Version .....	31
Task 1: Setting Up Access Privileges .....	31
Task 2: Licensing READ NATURALLY SE .....	32
Task 3: Installing the READ NATURALLY SE Server .....	33
Task 4: Adding Additional Levels .....	34
Task 5: Copying Stories to the Server .....	35
Task 6: Installing READ NATURALLY SE at Workstations .....	36
Task 7: Setting Each Workstation's Path .....	38
Task 8: Getting Started in the Teacher Management System .....	39
Uninstalling the Macintosh Network Version .....	40
<b>Chapter 6—Windows Internet Explorer Installation</b> .....	41
<b>Chapter 7—Macintosh Internet Explorer Installation</b> .....	43
<b>Chapter 8—Troubleshooting</b> .....	45
<b>Index</b> .....	47

# Chapter 1—General Information

This chapter provides general information about READ NATURALLY SE's requirements and installation options. This chapter includes the following topics:

- System Requirements
- Installation Types
- Contacting READ NATURALLY

## System Requirements

To use the READ NATURALLY SE applications, you must meet the following minimum hardware and software requirements.

### Windows

- Windows 95 or higher
- 200 MHz or faster
- 32 MB RAM
- 10 MB hard disk space
- CD-ROM drive
- 800 x 600 screen resolution
- Internet Explorer 5.0 or higher  
(included on the Installation CD)

### Macintosh

- System 9 or higher
- 200 MHz or faster
- 64 MB RAM
- 15 MB hard disk space
- CD-ROM drive
- 800 x 600 screen resolution
- Internet Explorer 5.0 or higher  
(included on the Installation CD)

## Installation Types

READ NATURALLY SE offers two different installation types.

Installation Type	Description
Stand-Alone	The stand-alone or local installation program installs the READ NATURALLY SE applications on a single computer. With this installation, teachers and students open the applications from the computer's hard drive, run the stories from the CD drive (using a separate CD for each level), and update a set of data files on the hard drive.
Network	The network installation program installs some of the READ NATURALLY SE applications on a server and some of the READ NATURALLY SE applications on client workstations. With this installation, teachers and students open the applications from their individual workstations, run the stories from either the workstation's CD drive or a network drive, and update a set of data files on a network drive on the server.

## Contacting READ NATURALLY

You can contact READ NATURALLY using the information below.

<b>Telephone</b>	651-452-4085 800-788-4085
<b>Fax</b>	651-452-9204
<b>Email</b>	info@readnaturally.com — For general questions. support@readnaturally.com — For technical assistance.
<b>Web</b>	www.readnaturally.com
<b>Office Hours</b>	Monday through Friday 9:00 A.M. to 5:00 P.M. Central Standard Time

## Chapter 2—Windows Stand-Alone Installation

This chapter provides information about installing the Windows stand-alone version of the READ NATURALLY SE applications. The stand-alone version installs the applications on a single computer. This chapter includes the following topics:

- What's Installed
- Installing the Windows Stand-Alone Version
- Uninstalling the Windows Stand-Alone Version

### What's Installed

The Windows stand-alone installation program installs the files and folders listed below (along with some additional files and folders used by the READ NATURALLY SE applications).

Files/Folders Installed	Description
RNStudentStories.exe	The Student Stories application
RNMgmt.exe	The Teacher Management System application
Data	A folder containing data files
RNHelp	A folder containing help files
Reports	A folder containing report files
Xtras	A folder containing files necessary to run programs
Lists	A folder containing lists of the stories in each level

## Installing the Windows Stand-Alone Version

The Windows stand-alone installation process includes the following tasks:

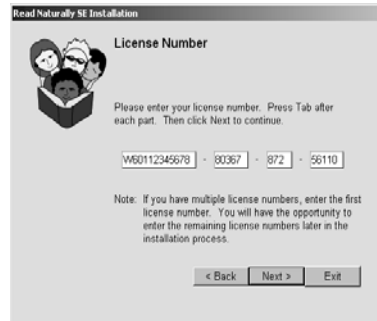
- Licensing READ NATURALLY SE
- Installing READ NATURALLY SE
- Adding Additional Levels
- Getting Started in the Teacher Management System

### Task 1: Licensing READ NATURALLY SE

Before you begin, you should close all other applications.

- 1 Insert the installation CD into the computer's CD-ROM drive. The installation program begins automatically. If the installation program doesn't begin automatically, go to the CD drive and double-click the Install.exe program.
- 2 Read the information on the Welcome window, and then click the Next button.
- 3 Enter your license number on the License Number window. If you have multiple license numbers, enter one of the license numbers (you will enter the others in task 4). Press the Tab key after entering each portion of the license number, and then click the Next button.

**Note:** If a message displays telling you your license number is invalid, contact READ NATURALLY.



## Installing the Windows Stand-Alone Version, continued

### Task 2: Installing READ NATURALLY SE

The READ NATURALLY SE installation program begins automatically after entering the licensing information.

- 1 Read the information on the Welcome window, and then click the Next button.
- 2 Read the license agreement information, and then click the I Agree button.
- 3 Indicate the location where you want to install the READ NATURALLY SE applications, and then click the Next button. The default location is C:\Program Files. You can accept the default location or browse to a different location. To browse to different location, click the ellipse (...) button. You do not need to create a folder. The installation program automatically creates a folder called READ NATURALLY.
- 4 Confirm the location where you want to install the applications, and then click the Start button to begin the installation process.



**Result:** The installation program creates a READ NATURALLY folder in the location you specified on the hard drive and a Student Stories shortcut for the desktop. A status bar shows the installation progress, and a message displays when the process completes.

- 5 Click the Exit button to continue with the installation process.

## Installing the Windows Stand-Alone Version, continued

### Task 3: Adding Additional Levels

After you complete the READ NATURALLY SE installation, you can enter additional license numbers to authorize additional levels. Follow the steps below to add additional levels and/or continue to task 4.

- 1 If you want to add another level, click the Next button. If you do not want to add another level, go to step 4.
- 2 Enter the next license number (pressing the Tab key after each portion), and then click the Next button.

**Result:** A message displays indicating the level was added successfully.



- 3 If you want to add another level, click the Next button and go to step 2. If you do not want to add another level, go to step 4.
- 4 Click the Exit button to finish adding levels.

### Task 4: Getting Started in the Teacher Management System

After you complete the READ NATURALLY SE installation, a message displays letting you know that you must enter teacher, class, and student information in the Teacher Management System before students can begin using the READ NATURALLY Student Stories program. If you want to open the Teacher Management System immediately, click the Yes button. The blue Teacher Management System will open. Then follow the directions on page 25 of the User Guide to get started in the Teacher Management System.

If you do not want to open the Teacher Management System now, click the No button. You can open the Teacher Management System later by following the directions on page 24 of the User Guide.

## Uninstalling the Windows Stand-Alone Version

To remove the READ NATURALLY SE applications from your computer, you need to complete the following tasks:

- Run the Uninstallation Program
- Delete the READ NATURALLY Folder (necessary if you have entered information in the Teacher Management System)

### Task 1: Run the Uninstallation Program

- 1 Select Start > Programs > READ NATURALLY > Uninstall READ NATURALLY.
- 2 Click the OK button to confirm you want to uninstall the READ NATURALLY files from your hard drive.
- 3 Click the OK button when reminded to delete the READ NATURALLY folder from your hard drive.

**Tip:** You can also uninstall READ NATURALLY SE by selecting Start > Settings > Control Panel > Add/Remove Programs and then selecting READ NATURALLY from the list of installed programs.

### Task 2: Delete the READ NATURALLY Folder

To delete the READ NATURALLY folder, complete the following steps:

- 1 Locate the READ NATURALLY folder on the hard drive, and then select it.
- 2 Select Delete from the File menu.

## **Chapter 3—Macintosh Stand-Alone Installation**

This chapter provides information about installing the Macintosh stand-alone version of the READ NATURALLY SE applications. The stand-alone version installs the applications on a single computer. This chapter includes the following topics:

- What's Installed
- Installing the Macintosh Stand-Alone Version
- Uninstalling the Macintosh Stand-Alone Version

## What's Installed

The Macintosh stand-alone installation program installs the files and folders listed below (along with some additional files and folders used by the READ NATURALLY SE applications).

Files/Folders Installed	Description
Student Stories	The Student Stories application
Teacher Management	The Teacher Management System application
Data	A folder containing data files
RNHelp	A folder containing help files
Reports	A folder containing report files
Xtras	A folder containing files necessary to run programs
Lists	A folder containing lists of the stories in each level

## Installing the Macintosh Stand-Alone Version

The Macintosh stand-alone installation process includes the following tasks:

- Licensing READ NATURALLY SE
- Installing READ NATURALLY SE
- Adding Additional Levels
- Getting Started in the Teacher Management System

### Task 1: Licensing READ NATURALLY SE

Before you begin, you should close all other applications.

- 1 Insert the installation CD into the computer's CD-ROM drive.
- 2 If the CD window does not open automatically, double-click the CD icon on the desktop to open the program.
- 3 Double-click the Install icon.
- 4 Read the information on the Welcome window, and then click the Next button.
- 5 Enter your license number on the License Number window. If you have multiple license numbers, enter one of the license numbers (you will enter the others in task 3). Press the Tab key after entering each portion of the license number, and then click the Next button.



**Note:** If a message displays telling you your license number is invalid, contact READ NATURALLY.

## Installing the Macintosh Stand-Alone Version, continued

### Task 2: Installing READ NATURALLY SE

The READ NATURALLY SE installation program begins automatically after entering the licensing information.

- 1 Read the information on the Welcome window, and then click the Continue button.
- 2 Read the information on the READ NATURALLY Software Edition License Agreement window, and then click the Agree button.
- 3 Click the Install button.
- 4 Indicate the location where you want to install the READ NATURALLY SE applications, and then click the Choose button to begin the installation process.

The default location is the computer's hard drive (e.g., if the hard drive name is "Macintosh HD," the default is "Macintosh HD"). You can accept the default location by clicking the Choose button or you can select a different location. You do not need to create a folder. The installation program automatically creates a folder called READ NATURALLY.



**Result:** The installation program creates a READ NATURALLY folder in the location you specified on the hard drive and a Student Stories alias for the desktop. A status bar shows the installation progress, and a message displays when the process completes.

## Installing the Macintosh Stand-Alone Version, continued

### Task 3: Adding Additional Levels

After you complete the READ NATURALLY SE installation, you can enter additional license numbers to authorize additional levels. Follow the steps below to add additional levels and/or continue to task 4.

- 1 If you want to add another level, click the Next button. If you do not want to add another level, go to step 4.
- 2 Enter the next license number (pressing the Tab key after each portion), and then click the Next button.

**Result:** A message displays indicating the level was added successfully.



- 3 If you want to add another level, click the Next button and go to step 2. If you do not want to add another level, go to step 4.
- 4 Click the Exit button to finish adding levels.

### Task 4: Getting Started in the Teacher Management System

After you complete the READ NATURALLY SE installation, a message displays letting you know that you must enter teacher, class, and student information in the Teacher Management System before students can begin using the READ NATURALLY Student Stories program. If you want to open the Teacher Management System immediately, click the Yes button. The blue Teacher Management System will open. Then follow the directions on page 25 of the User Guide to get started in the Teacher Management System.

If you do not want to open the Teacher Management System now, click the No button. You can open the Teacher Management System later by following the directions on page 24 of the User Guide.

## Uninstalling the Macintosh Stand-Alone Version

To remove the READ NATURALLY SE applications from your computer, you need to complete the following tasks:

- 1 Insert the installation CD into the computer's CD-ROM drive.
- 2 Double-click the *Uninstall Read Naturally SE* icon.
- 3 Select the Uninstall option from the drop-down menu, and then click the Uninstall button.

**Result:** The uninstall program removes all of the READ NATURALLY SE files from your hard drive.



# Chapter 4—Windows Network Installation

This chapter provides information about installing the Windows network version of the READ NATURALLY SE applications. The network version installs some of the applications on a server and some of the applications on client workstations. This chapter includes the following topics:

- What's Installed
- Installing the Windows Network Version
- Uninstalling the Windows Network Version

## What's Installed

The Windows network installation program installs the files and folders listed below on the server (along with some additional files and folders used by the READ NATURALLY SE applications).

Files/Folders Installed	Description
InstallWkstnWin.exe	The workstation installation program
RNReset.exe	A utility that resets user information
FileCopy.exe	An application that copies the stories to the server
Data	A folder containing data files
ReadNaturallyCD	A folder containing stories for each level licensed

The Windows network installation program installs the files and folders listed below on each client workstation (along with some additional files and folders used by the READ NATURALLY SE applications).

Files/Folders Installed	Description
RNStudentStories.exe	The Student Stories application
RNMgmt.exe	The Teacher Management System application
RNHelp	A folder containing help files
Reports	A folder containing report files

## Installing the Windows Network Version

The Windows network installation process includes the following tasks:

- Setting Up Access Privileges
- Licensing READ NATURALLY SE
- Installing the READ NATURALLY SE Server
- Adding Additional Levels
- Copying Stories to the Server
- Installing READ NATURALLY SE at Workstations
- Getting Started in the Teacher Management System

### Task 1: Setting Up Access Privileges

Prior to running the READ NATURALLY installation program, you or someone with full access privileges to the server (e.g., the network administrator) must create a shared folder on the server. You need to install the READ NATURALLY applications to this shared folder. You should name the folder something other than "READ NATURALLY" (e.g., "Reading Class" or "Reading") because the installation program automatically creates a subfolder called READ NATURALLY.

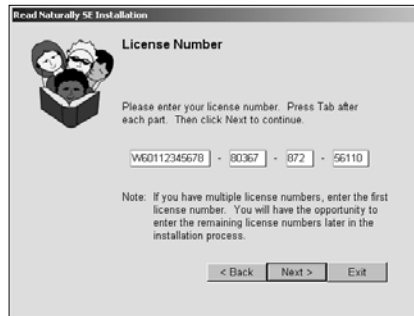
All teachers and students who will use the READ NATURALLY applications need read/write access privileges to the shared folder on the server. You may want to set up a user group or a logon account for each teacher and student that provides the correct access to the READ NATURALLY information on the server.

### Task 2: Licensing READ NATURALLY SE

Before you begin, you should close all other applications. To complete both the READ NATURALLY SE Licensing and the READ NATURALLY SE Server Installation tasks, you must logon to the network as the network administrator from a client workstation (i.e. you must have full access privileges to the server).

- 1 Logon to the network from a client workstation as the network administrator.
- 2 Insert the installation CD into the CD-ROM drive. The installation program begins automatically. If the installation program doesn't begin automatically, go to the CD drive and double-click the Install.exe program.
- 3 Read the information on the Welcome window, and then click the Next button.
- 4 Enter your license number on the License Number window. If you have multiple license numbers, enter one of the license numbers (you will enter the others in task 4). Press the Tab key after entering each portion of the license number, and then click the Next button.

**Note:** If a message displays telling you your license number is invalid, contact READ NATURALLY.



## Installing the Windows Network Version, continued

### Task 3: Installing the READ NATURALLY SE Server

The READ NATURALLY SE server installation program begins automatically after you enter your licensing information.

- 1 Read the information on the Welcome window, and then click the Next button.
- 2 Read the license agreement information, and then click the I Agree button.
- 3 Indicate the location on the server where you want to install the READ NATURALLY SE applications. You should browse to the shared folder you created when setting up access privileges (task 1). To browse to the folder, click the ellipse (...) button. When you find the correct folder, click the OK button. Then click the Next button.



**Result:** The installation program automatically creates a subfolder in the shared folder called READ NATURALLY.

- 4 Confirm the location to install the programs, and then click the Start button to begin the installation process.

**Result:** The installation program copies the READ NATURALLY files to the location you specified on the server's hard drive. A status bar shows the installation progress, and a message displays when the process completes.

- 5 Click the Exit button to continue with the installation process.

**Result:** A message displays indicating that the first level was added successfully.

### Task 4: Adding Additional Levels

After you complete the READ NATURALLY SE server installation, you can enter additional license numbers to authorize additional levels. Follow the steps below to add additional levels and/or continue to task 5.

- 1 If you want to add another level, click the Next button. If you do not want to add another level, go to step 4.
- 2 Enter the next license number (pressing the Tab key after each portion), and then click the Next button.

**Result:** A message displays indicating the level was added successfully.



- 3 If you want to add another level, click the Next button and go to step 2. If you do not want to add another level, go to step 4.

**Result:** A window displays asking whether you want to copy the stories from the disks to the server.

- 4 Click the Exit button to finish adding levels.

### Task 5: Copying Stories to the Server

With a network installation, you can copy the READ NATURALLY stories to the server. If you copy the stories to the server, students do not need to use the individual CDs for each level when they run the Student Stories application. Each READ NATURALLY level requires approximately 250 MB of drive space. If you copy all the READ NATURALLY levels to the server it requires approximately 4 GB of drive space.

**Note:** You should only run the stories from the server if your server has the appropriate drive space available and you have a relatively fast network. Otherwise, you should run the stories from the individual CDs at the workstations. Once you copy the stories to the server, students cannot use the CDs to run the stories unless you reinstall the program.

- 1 If you want to copy the stories to the server now, click the Yes button and go to step 2. If you do not want to copy the stories to the server now, click the No button and go to task 6.
- 2 Insert the CD for the level you want to copy in the CD-ROM drive of a client workstation. Then click the Continue button.

**Result:** A message displays, verifying the level you are copying (from the CD) and the location to which the level will be copied (the READ NATURALLY program folder on the server).

- 3 Click the Yes button to continue.

## Installing the Windows Network Version, continued

**Result:** The program copies the stories to the server. A status bar shows the copy progress, and a message indicating that the level was added successfully displays when the process completes. The copy process for a single level takes approximately five to ten minutes (depending on the type of server and the drive space available).

- 4 If you want to copy another level, click the Yes button and go to step 2. If you do not want to add another level, go to step 5.
- 5 Click the No button to indicate you do not want to copy another level.

### Task 6: Installing READ NATURALLY SE at Workstations

You must run the workstation installation program at each workstation where teachers or students will use the READ NATURALLY SE applications. To complete the workstation installation, you need access to the folder you created on the server when setting up access privileges (task 1).

- 1 Logon to the network from the client workstation as a user who can access the RN Server folder on the server.
- 2 Connect the client workstation to the shared folder you created on the server by selecting Map Network Drive from the Tools menu in the Explorer, selecting the same drive letter to which you installed the READ NATURALLY applications, and enter the path to the folder you created on the server (e.g. \\server\Reading Class) in the Path field (or Folder field in Windows XP).
- 3 Double-click the InstallWkstnWin.exe program in the RN Server folder on the server.

## Installing the Windows Network Version, continued

- 4 Read the welcome information, and then click the Next button.
- 5 Read the license agreement information, and then click the I Agree button.
- 6 Indicate the location where you want to install the READ NATURALLY SE applications. The default location is C:\Program Files. You can accept the default location or browse to a different location. To browse to a different location, click the ellipse (...) button. When you find the correct location, click the Next button. You do not need to create a folder. The installation program automatically creates a folder called READ NATURALLY.
- 7 Confirm the location where you want to install the programs, and then click the Start button to begin the installation process.



**Result:** The installation program copies the READ NATURALLY files to the location you specified on the workstation's hard drive and creates a Student Stories shortcut for the desktop. A status bar shows the installation progress, and a message displays when the process completes.

- 8 Click the Exit button to complete the READ NATURALLY workstation installation.

### Task 7: Getting Started in the Teacher Management System

After you complete the READ NATURALLY SE installation, a message displays letting you know that you must enter teacher, class, and student information in the Teacher Management System before students can begin using the READ NATURALLY Student Stories program. If you want to open the Teacher Management System immediately, click the Yes button. The blue Teacher Management System will open. Then follow the directions on page 25 of the User Guide to get started in the Teacher Management System.

If you do not want to open the Teacher Management System now, click the No button. You can open the Teacher Management System later by following the directions on page 24 of the User Guide.

## Uninstalling the Windows Network Version

To remove the READ NATURALLY SE applications from your system, you need to complete the following tasks:

- Run the Uninstallation Program at Each Workstation
- Delete the READ NATURALLY Folder From the Server

### Task 1: Run the Uninstallation Program at Each Workstation

- 1 Select Start > Programs > READ NATURALLY > Uninstall READ NATURALLY.
- 2 Click OK to confirm you want to uninstall the READ NATURALLY files.

**Tip:** You can also uninstall READ NATURALLY SE by selecting Start > Settings > Control Panel > Add/Remove Programs and then selecting READ NATURALLY from the list of installed programs.

### Task 2: Delete the READ NATURALLY Folder From the Server

To delete the READ NATURALLY folder from the server, complete the following steps:

- 1 Locate the RN Server folder on the server, and then select it.
- 2 Select Delete from the File menu.
- 3 Click the Yes button to confirm you want to delete the folder and its contents.

# Chapter 5—Macintosh Network Installation

This chapter provides information about installing the Macintosh network version of the READ NATURALLY SE applications. The network version installs some of the applications on a server and some of the applications on client workstations. This chapter includes the following topics:

- What's Installed
- Installing the Macintosh Network Version
- Uninstalling the Macintosh Network Version

## What's Installed

The Macintosh network installation program installs the files and folders listed below on the server (along with some additional files and folders used by the READ NATURALLY SE applications).

Files/Folders Installed	Description
InstallWkstnMac	The workstation installation program
RNReset	A utility that resets user information
FileCopy	An application that copies the stories to the server
Data	A folder containing data files
ReadNatCD	A folder containing stories for each level licensed

The Macintosh network installation program installs the files and folders listed below on each client workstation (along with some additional files and folders used by the READ NATURALLY SE applications).

Files/Folders Installed	Description
Student Stories	The Student Stories application
Teacher Management	The Teacher Management System application
SetProgPath	A utility that sets each workstation's path to the server
RNHelp	A folder containing help files
Reports	A folder containing report files

## Installing the Macintosh Network Version

The Macintosh network installation process includes the following tasks:

- Setting Up Access Privileges
- Licensing READ NATURALLY SE
- Installing the READ NATURALLY SE Server
- Adding Additional Levels
- Copying Stories to the Server
- Installing READ NATURALLY SE at Workstations
- Setting Each Workstation's Path
- Getting Started in the Teacher Management System

### Task 1: Setting Up Access Privileges

Prior to running the READ NATURALLY installation program, you or someone with full access privileges to the server (e.g., the network administrator) must create a shared folder on the server. You need to install the READ NATURALLY applications to this shared folder. You should name the folder something other than "READ NATURALLY" (e.g., "Reading Class" or "Reading") because the installation program automatically creates a subfolder called READ NATURALLY.

All teachers and students who will use the READ NATURALLY applications need read/write access privileges to the shared folder on the server. You may want to set up a user group or a logon account for each teacher and student that provides the correct access to the READ NATURALLY information on the server.

### Task 2: Licensing READ NATURALLY SE

Before you begin, you should close all other applications. To complete both the READ NATURALLY SE Licensing and the READ NATURALLY SE Server Installation tasks, you must logon to the network as the network administrator and have full access privileges to the server.

- 1 Logon to the network from a client workstation as the network administrator.
- 2 Insert the installation CD into the CD-ROM drive.
- 3 If the CD window does not open automatically, double-click the CD icon on the desktop to open the CD.
- 4 Double-click the Install icon.
- 5 Read the information on the Welcome window, and then click the Next button.
- 6 Enter your license number on the License Number window. If you have multiple license numbers, enter one of the license numbers (you will enter the others in task 4). Press the Tab key after entering each portion of the license number, and then click the Next button.

**Note:** If a message displays telling you your license number is invalid, contact READ NATURALLY.



## Installing the Macintosh Network Version, continued

### Task 3: Installing the READ NATURALLY SE Server

The READ NATURALLY SE server installation program begins automatically after you enter your licensing information.

- 1 Read the information on the READ NATURALLY Software Edition License Agreement window, and then click the Agree button.
- 2 Verify that READ NATURALLY Server option is selected, and then click the Install button.
- 3 Indicate the location on the server where you want to install the READ NATURALLY SE applications. You should select the shared folder you created when setting up access privileges (task 1). Then click the Choose button to begin the installation process.



**Result:** The installation program copies the READ NATURALLY files to the location you specified on the server's hard drive. A status bar shows the installation progress, and a message displays when the process completes.

### Task 4: Adding Additional Levels

After you complete the READ NATURALLY SE server installation, you can enter additional license numbers to authorize additional levels. Follow the steps below to add additional levels and/or continue to task 5.

- 1 If you want to add another level, click the Next button. If you do not want to add another level, go to step 4.
- 2 Enter the next license number (pressing the Tab key after each portion), and then click the Next button.

**Result:** A message displays indicating the level was added successfully.



- 3 If you want to add another level, click the Next button and go to step 2. If you do not want to add another level, go to step 4.
- 4 Click the Exit button to finish adding levels.

**Result:** A message displays asking whether you want to copy the stories from the disks to the server.

### Task 5: Copying Stories to the Server

With a network installation, you can copy the READ NATURALLY stories to the server. If you copy the stories to the server, students do not need to use the individual CDs for each level when they run the Student Stories application. Each READ NATURALLY level requires approximately 250 MB of drive space. If you copy all the READ NATURALLY levels to the server it requires approximately 4 GB of drive space.

**Note:** You should only run the stories from the server if your server has the appropriate drive space available and you have a relatively fast network. Otherwise, you should run the stories from the individual CDs at the workstations. Once you copy the stories to the server, students cannot use the CDs to run the stories unless you reinstall the program.

- 1 If you want to copy the stories to the server now, click the Yes button and go to step 2. If you do not want to copy the stories to the server now, click the No button and go to task 6.
- 2 Remove the installation disk (or level disk) by dragging the RNInstall icon to the trash.
- 3 Insert the CD for the level you want to copy in the CD-ROM drive of a client workstation. Then click the Continue button.

**Result:** A message displays, verifying the level you are copying (from the CD) and the location to which the level will be copied (the READ NATURALLY program folder on the server).

- 4 Click the Yes button to continue.

## Installing the Macintosh Network Version, continued

**Result:** The program copies the stories to the server. A status bar shows the copy progress, and a message indicating that the level was added successfully displays when the process completes. The copy process for a single level takes approximately five to ten minutes (depending on the type of server and the drive space available).

- 4 If you want to copy another level, click the Yes button and go to step 2. If you do not want to add another level, go to step 5.
- 5 Click the No button when the copy process completes.

### Task 6: Installing READ NATURALLY SE at Workstations

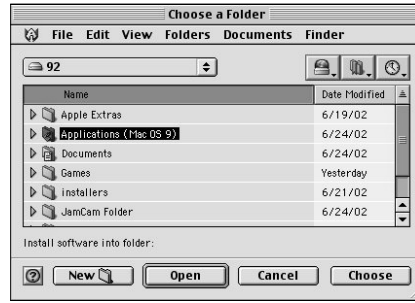
You must run the workstation installation program at each workstation where teachers or students will use the READ NATURALLY applications. To complete the workstation installation, you need access to the folder you created on the server when setting up access privileges (task 1).

- 1 Logon to the network from the client workstation as a user who can access the RN Server folder on the server.
- 2 Double-click the InstallWkstnMac program in the RN Server folder on the server.
- 3 Read the information on the Welcome window, and then click the Continue button.
- 4 Read the information on the READ NATURALLY Software Edition License Agreement window, and then click the Agree button.
- 5 Verify that READ NATURALLY SE Workstation is highlighted, and click the Install button.



## Installing the Macintosh Network Version, continued

- 6 Indicate the location where you want to install the READ NATURALLY SE applications, and then click the Choose button to begin the installation process. The default location is the computer's hard drive (e.g., if the hard drive name is "Macintosh HD," the default is "Macintosh HD"). You can accept the default location by clicking the Choose button or you can select a different location. You do not need to create a folder. The installation program automatically creates a folder called READ NATURALLY.



**Result:** The installation program copies the READ NATURALLY files to the location you specified on the workstation's hard drive. A status bar shows the installation progress, and a message displays when the process completes. The installation program creates a "Student Stories" alias for the desktop and a READ NATURALLY program folder.

## Installing the Macintosh Network Version, continued

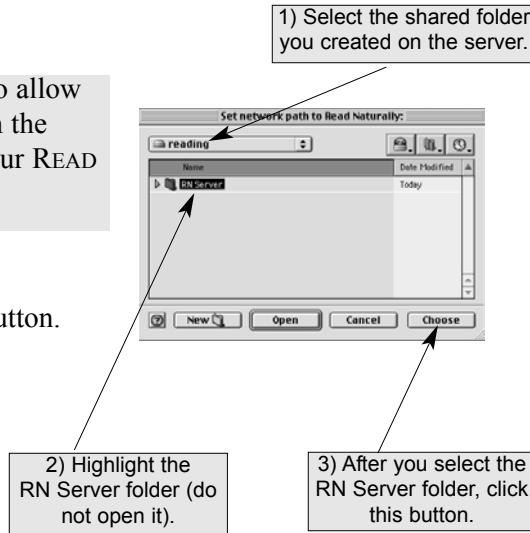
### Task 7: Setting Each Workstation's Path

In order to transfer the READ NATURALLY data collected at each workstation to one central location on the server, you must set up a path at each workstation that points to the RN Server folder on the server. To set each workstation's path, follow these steps:

- 1 Click the Next button.

**Result:** The navigation window opens to allow you to browse to the location on the server where you have saved your READ NATURALLY files.

- 2 Select the RN Server folder on the server, and then click the Choose button.



### Task 8: Getting Started in the Teacher Management System

After you complete the READ NATURALLY SE installation, you have the option of immediately getting started in the program. A message displays letting you know that you must enter teacher, class, and student information in the Teacher Management System before students can begin using the READ NATURALLY program. If you want to open the Teacher Management System immediately, click the Yes button. The blue Teacher Management System will open. Then follow the directions on page 25 of the User Guide to get started in the Teacher Management System.

If you do not want to open the Teacher Management System now, click the No button. You can open the Teacher Management System later by following the directions on page 24 of the User Guide.

## Uninstalling the Macintosh Network Version

To remove the READ NATURALLY SE applications from your system, you need to complete the following tasks:

- Run the Uninstallation Program at Each Workstation
- Delete the READ NATURALLY Folder From the Server

### Task 1: Run the Uninstallation Program at Each Workstation

- 1 Insert the installation CD into the computer's CD-ROM drive.
- 2 If the CD window does not open automatically, double-click the CD icon on the desktop to open the CD.
- 3 Double-click the *Uninstall Read Naturally SE* icon.
- 4 Select the Uninstall option from the drop-down menu, and then click the Uninstall button.

**Result:** The uninstall program removes all of the READ NATURALLY SE files from your hard drive.



### Task 2: Delete the READ NATURALLY Folder From the Server

To delete the READ NATURALLY folder from the server, complete the following steps:

- 1 Locate the RN Server folder on the server, and then select it.
- 2 Drag the folder to the trash to delete it.

## Chapter 6—Windows IE Installation

In order to view READ NATURALLY SE's reports, awards, and online help, the computer must have Internet Explorer 5.0 or higher installed. If your computer does not already have Internet Explorer, you can install the version included on the CD, or you can download the latest version from Microsoft by visiting [www.microsoft.com/windows/ie](http://www.microsoft.com/windows/ie).

To install Internet Explorer for Windows from the installation CD, follow the steps below:

- 1 Insert the installation CD in the computer's CD-ROM drive.
- 2 If the installation program begins automatically, click the Exit button and then the Yes button to confirm you want to Exit the READ NATURALLY installation.
- 3 Go to the CD drive, and open (double-click) the Setup folder.
- 4 Open (double-click) the READ NATURALLY folder.
- 5 Open (double-click) the Ie5setup folder.
- 6 Double-click the Ie5setup.exe installation program.

**Result:** The Internet Explorer installation wizard opens.

- 7 Follow the on-screen installation instructions.

**Note:** To uninstall Internet Explorer, use the Add/Remove programs function available through the Control Panel of your Windows computer.



# Chapter 7—Macintosh IE Installation

In order to view READ NATURALLY SE's reports, awards, and online help, the computer must have Internet Explorer 5.0 or higher installed. If your computer does not already have Internet Explorer, you can install the version included on the CD, or you can download the latest version from Microsoft by visiting [www.microsoft.com/mac/products/ie](http://www.microsoft.com/mac/products/ie).

To install Internet Explorer for Macintosh from the installation CD, follow the steps below:

- 1 Insert the installation CD in the computer's CD-ROM drive.
- 2 If it does not open automatically, double click the CD icon on the desktop to open the CD.
- 3 Double-click the IE5 folder.
- 4 Drag the Microsoft Internet 5 folder to your desktop (or other location).

**Note:** To uninstall Internet Explorer, drag the Microsoft Internet 5 folder to the trash to delete it from your Macintosh computer.



# Chapter 8—Troubleshooting

This chapter provides troubleshooting information to help you solve problems you may have when installing READ NATURALLY SE.

## Installation Issues

The table below provides solutions to common installation issues.

Problem	Solution
I can't install READ NATURALLY SE after having the trial basis version.	Go into the System folder (on a Mac) or the Windows folder (on a PC) and delete the file called "12574.v12." You will not need to uninstall the trial version. Just put the install disc in the computer and enter the new license numbers.
How do I reinstall the SE programs? When I insert the Install disc, it says it will add levels without reinstalling all the files.	To reinstall the SE program, follow these steps: <ol style="list-style-type: none"><li>1 For Windows, navigate to C:\Windows. For Macintosh, navigate to Mac HD\System Folder.</li><li>2 Delete the "RNInst0602" file.</li><li>3 Run the installation program to reinstall the files.</li></ol>
I want to set up my network version to work with both Mac and Windows clients. Is that possible?	Yes, the SE network version can be installed to use cross-platform. Make sure you have separate codes for both the Mac and the Windows installation. (Contact READ NATURALLY if you are missing a code.) Then follow these steps: <ol style="list-style-type: none"><li>1 Install the Windows network version on the server.</li></ol>

## Installation Issues, continued

Problem	Solution
(See the previous page.)	<p><b>Note:</b> If you want to copy the stories to the server, you will need to copy them during both the Windows and Macintosh network installations. These installations will copy the files to a READNATURALLYCD and a READNATCD folder respectively. You will need 500 MB of server space per level.</p> <p><b>2</b> Install the Macintosh network version on the server, using the RN Server folder that was created by the Windows installation as the location for the Macintosh installation.</p> <p><b>Result:</b> The installation program will add the files required to run the Macintosh version to the folder.</p> <p><b>3</b> Run the Windows client installation from each Windows workstation by navigating to the RN Server folder on the server, double-clicking on the InstallWkstnWin icon, and following the on-screen instructions. (You can also see page 25 in the Installation Guide)</p> <p><b>4</b> Run the Macintosh client installation from each Macintosh workstation by navigating to the RN Server folder on the server, double-clicking on the InstallWkstnMac icon, and following the on-screen instructions. (You can also see page 36 in the Installation Guide.)</p>

# Index

## A

- access privileges, 20, 31
- adding additional levels
  - Macintosh network, 34
  - Macintosh stand-alone, 15
  - Windows network, 23
  - Windows stand-alone, 8
- applications installed, 5, 12, 19, 30

## B

- browser requirements, 2

## C

- contacting READ NATURALLY, 4
- copying stories to the server, 24, 35
- cross-platform installation, 46

## D

- data files, 5, 12, 19, 30
- deleting folders
  - Macintosh, 40
  - Windows, 10, 28

## E

- mail for READ NATURALLY, 4
- equipment requirements, 2

## F

- fax number for READ NATURALLY, 4
- FileCopy, 30
- FileCopy.exe, 19

## G

- getting started in the Teacher Management System, 9, 16, 27
- getting started in the Teacher Management System application, 39

## H

- hardware requirements, 2

- help files, 5, 12, 19, 30

## I

- Install, 13, 32
- Install.exe, 6, 21
- installation types for READ NATURALLY SE, 3
- installing

- after having the trial basis version, 45
- cross-platform, 46

- Internet Explorer, 41, 43

- installing READ NATURALLY SE

- Macintosh network version, 31
- Macintosh stand-alone version, 13
- Windows network version, 20
- Windows stand-alone version, 6

- Internet Explorer as a requirement, 2

- Internet Explorer installation, 41, 43

## L

- license numbers, 6, 13, 21, 32

## M

- Macintosh network

- licensing, 32
- server installation, 33
- uninstalling, 40
- workstation installations, 36

- Macintosh stand-alone

- installing, 14
- licensing, 13
- uninstalling, 17

- memory requirements, 2

## N

- network

- access privileges, 20, 31
- licensing, 21, 32

## Index, continued

network installations, 3, 20, 31

### O

office hours for READ NATURALLY, 4

operating system requirements, 2

### P

paths for Macintosh workstations, 38

platform requirements, 2

### R

RAM requirements, 2

READ NATURALLY SE installation types, 3

reinstalling, 45

report files, 5, 12, 19, 30

requirements for READ NATURALLY SE, 2

RNHelp, 5, 12, 19, 30

RNInstallWkstn, 30, 36

RNInstallWkstn.exe, 19, 25

RNMgmt.exe, 5, 19

RNReset, 30

RNReset.exe, 19

RNStudentStories.exe, 5, 19

### S

screen resolution, 2

server

    copying stories to, 24

server installation, 22, 33

SetProgPath, 38

SetProgPath, 30

setting up access privileges, 20, 31

setting workstation paths, 38

shared folder on the server, 20, 31

software requirements, 2

stand-alone installations, 3, 6, 13

stories on the server, 35

Student Stories, 12, 30

Student Stories application, 5, 12, 19, 30

system requirements, 2

### T

Teacher Management, 12

Teacher Management System application, 5, 12, 19, 30

getting started, 9, 16, 27, 39

technical support for READ NATURALLY, 4

telephone number for READ NATURALLY, 4

trial basis version, 45

### U

uninstalling

    Macintosh network version, 40

    Macintosh stand-alone version, 17

    Windows network version, 28

    Windows stand-alone version, 10

### W

web site for READ NATURALLY, 4

Windows network

    licensing, 21

    server installation, 22

    uninstalling, 28

workstation installations, 25

Windows stand-alone

    installing, 7

    licensing, 6

    uninstalling, 10

workstation installations, 25, 36

### X

Xtras, 5