

## Read Naturally SE 2.0.3 Update

# Windows Stand-Alone Installation Instructions

---

This document explains how to apply the Read Naturally Software Edition 2.0.3 update to existing installations of SE version 2.0, 2.0.1, and 2.0.2.

**Important:** It is very important that you backup your data before updating. This is an **essential** step and is your only insurance should something go wrong.

### To back up your data:

1. Start SE database utilities (**rnse\_DBUtilities.exe**) from the following location.

**\Program Files\Read Naturally SE 2**

2. From the **Backup/Restore** tab, click **Create Backup**, and then click **Continue**.
3. Browse to the folder where you want to save the backup file, select the folder, and then click **OK**.
4. When the backup is finished, click **OK**.
5. Click **Quit** to close the database utilities.

**Note:** If you do not have the SE database utility, it can be downloaded from the following web page:

**[www.readnaturally.com/support/products-se2dbUtil.htm](http://www.readnaturally.com/support/products-se2dbUtil.htm)**

### To update Windows stand-alone installations:

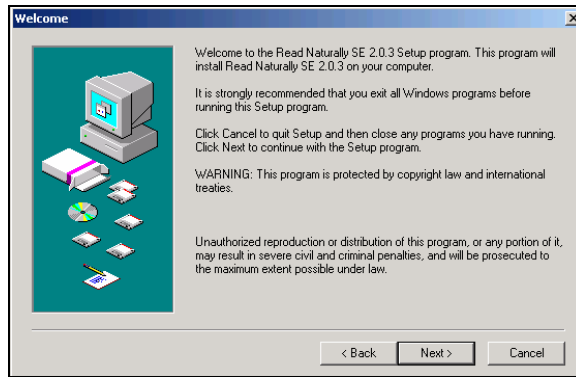
1. Download the installation file **RNSA\_203\_Win.exe** from the following web page to the Windows computer:

**[www.readnaturally.com/support/products-se203upd.htm](http://www.readnaturally.com/support/products-se203upd.htm)**

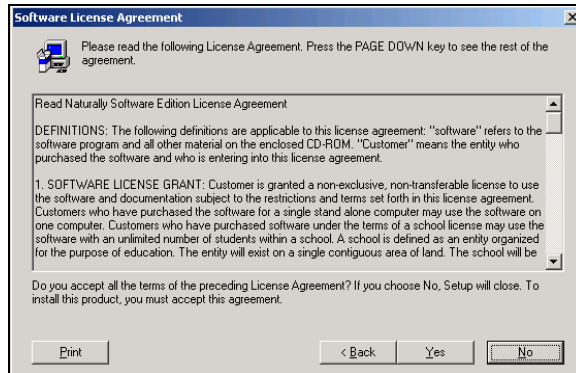
2. Locate the downloaded file on your computer and double-click it. The Read Naturally SE 2.0.3 Setup screen displays. Click **Next**.



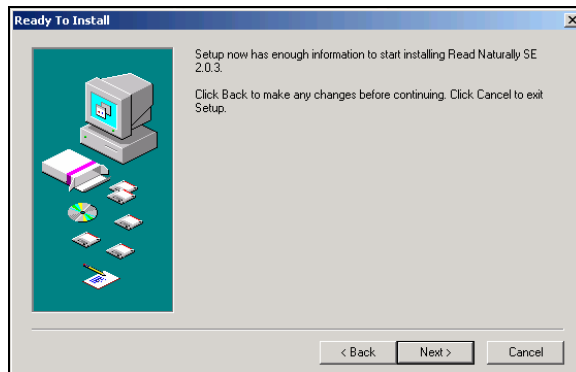
3. The Welcome screen displays. Click **Next**.



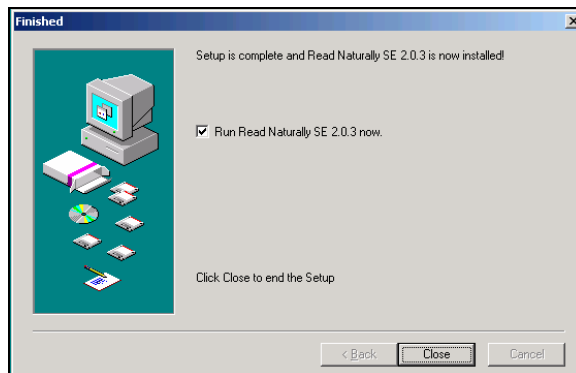
4. The Software License Agreement displays. Read the license agreement (you can click **Print** to print it), and then click **Yes** to continue with the upgrade.



5. The Read Naturally SE 2.0.3 updater automatically locates the existing SE files. Click **Next** to start the upgrade. A bar shows the installation progress.

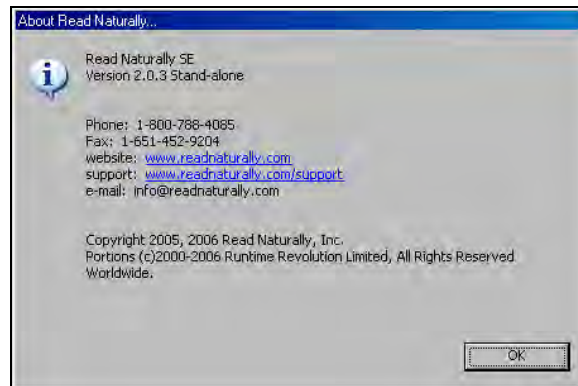


6. When the update finishes, click **Close**.



7. Perform the following steps to confirm that the SE software has been updated:

- a. Start Read Naturally SE. The login screen displays.
- b. From the Help menu, choose **About Read Naturally**.



- c. Confirm that the SE version shown is **Version 2.0.3 Stand-alone**.
- d. Click **OK** to close the About window, and then click **Exit** to close the login screen